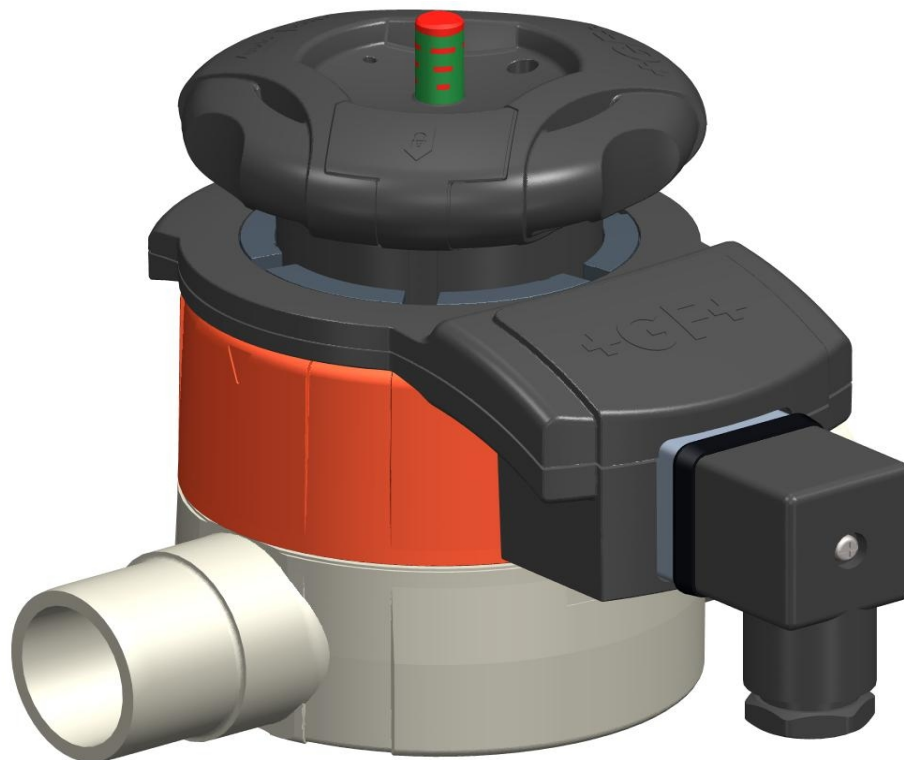


## 1 Background

Exactly for the new year we can release the Electrical Feedback Module for sales

The electrical Feedback is a real **Plug 'n' Player** and sets new standards in terms of user friendliness and **Simplicity**.

Previous solutions required considerable modifications of the diaphragm valves. The new Electric-Feedback Module is fast to install. Order it, mount it on the valve, connect the wiring, open & close it twice for calibration and then it is ready for action. No hassle with drilling holes, ohm meters, calibrations, etc. Simplicity at it's best.



## 2 Product Range

The new electrical feedback module is available with the following code numbers. All electrical feedback modules come with the electrical cable plug.

### Electrical feedback module (I33) With limit switches Ag Ni or AU

**Model:**

- Accessory to hand operated diaphragm valve 514 - 519
- No height increase
- Easy, fast and safe installation
- Self adjusting mechanism
- Including Plug 3P+E / Protection: IP65

d-d [mm]	DN-DN [mm]	Size	Ag Ni Code	AU Code	
10 - 25	10 - 20	1	198 151 335	198 151 336	
32 - 40	25 - 32	2	198 151 337	198 151 338	
50 - 63	40 - 50	3	198 151 339	198 151 340	

You can also configure an assembled valve with our online-configurator. This makes installation and commissioning even easier. With the Electric Feedback Module already installed on the diaphragm valve.

## 3 Calibration

The Electrical Feedback Unit comes pre-calibrated. The customer just has to assemble the feedback unit, wire it up and open & close it twice for calibration. In case the electrical feedback is used on another valve it is required to re-adjust the indicator cams according to the user manual.

## 4 Upgrade of existing valve

The mechanism of the electrical feedback unit required a slight modification to the handwheel base. These changes have already been implemented in October. In case your customer wants to upgrade new diaphragm valves sold from April-Oct, the handwheel also needs to be changed. For those cases we will provide handwheels free of charge.

## 5 Availability

The Electric Feedback Unit will be available for normal orders starting Jan, 1st. The items are MtO (Made to Order) with average lead times of 10 working days.